

**ANALOG VIDEO
QUICK GUIDE**

TVVR33603, TVVR33803

V1.0

DE

- 1 Power-LED
- 2 Daten-LED
- 3 Netzwerk-LED
- 4 RJ45-Anschluss
- 5 BNC-Eingang
- 6 HDMI Monitoranschluss
- 7 VGA Monitoranschluss
- 8 Anschluss für USB-Geräte
- 9 12V DC Stromanschluss

GB

- 1 Power LED
- 2 Data LED
- 3 Network LED
- 4 RJ45 port
- 5 BNC input
- 6 HDMI monitor connection
- 7 VGA monitor connection
- 8 Connection for USB devices
- 9 12 V DC connection for power supply

FR

- 1 LED d'alimentation
- 2 LED de données
- 3 LED réseau
- 4 Connexion RJ45
- 5 Entrée BNC
- 6 Raccordement pour moniteur HDMI
- 7 Raccordement VGA pour moniteur
- 8 Connexion pour appareils USB
- 9 Branchement électrique 12 V CC

NL

- 1 Power-LED
- 2 Gegevens-LED
- 3 Netwerk LED
- 4 RJ45-aansluiting
- 5 BNC-ingang
- 6 HDMI-monitoraansluiting
- 7 VGA-monitoraansluiting
- 8 Aansluiting voor USB-apparaten
- 9 12V-DC-stroomaansluiting

DK

- 1 Power-LED
- 2 Data-LED
- 3 Netværks-LED
- 4 RJ45-stik
- 5 Entrada BNC
- 6 HDMI-monitortilslutning
- 7 VGA monitortilslutning
- 8 Tilslutning til USB-apparater
- 9 12 V DC-strømtilslutning

IT

- 1 LED Power
- 2 Dati LED
- 3 LED di rete
- 4 Collegamento RJ45
- 5 Ingresso BNC
- 6 Porta per monitor HDMI
- 7 Porta per monitor VGA
- 8 Collegamento per apparecchi USB
- 9 Allacciamento elettrico 12 Vcc

SE

- 1 Power-LED
- 2 Data-LED
- 3 Nätverks-LED
- 4 RJ45-anlutning
- 5 BNC-ingång
- 6 HDMI-skärmanlutning
- 7 VGA-skärmanlutning
- 8 Anlutning för USB-enheter
- 9 12 V DC-strömlutning

ES

- 1 LED de alimentación
- 2 LED de datos
- 3 LED de red
- 4 Conector RJ45
- 5 Entrada BNC
- 6 Puerto HDMI para monitor
- 7 Conexión de monitor VGA
- 8 Conexión para aparatos USB
- 9 Conexión de corriente de 12 V CC

PL

- 1 Dioda LED zasilania
- 2 Dane LED
- 3 Dioda LED sieci
- 4 Złącze RJ45
- 5 Wejście BNC
- 6 Złącze HDMI do monitora
- 7 Złącze VGA do monitora
- 8 Złącze do urządzeń USB
- 9 Podłączenie do sieci 12 V DC

EMPFOHLENES ZUBEHÖR
RECOMMENDED ACCESSORIES • ACCESSOIRES RECOMMANDES •
AANBEVOLEN ACCESSOIRES • ANBEFALET TILBEHØR •
ACCESSORI RACCOMANDATI • REKOMMENDERADE TILLBEHÖR •
ACCESORIOS RECOMENDADOS • ACESORIOS RECOMENDADOS



2 MPx



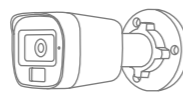
abus.com/products/TVCC52512



5 MPx



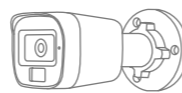
abus.com/products/TVCC55512



2 MPx



abus.com/products/TVCC32512



5 MPx



abus.com/products/TVCC35512

Für weitere Hilfe steht unser Support-Team für Sie zur Verfügung: support@abus-sc.com

Our Support Team will be happy to help you with any further questions: support@abus-sc.com

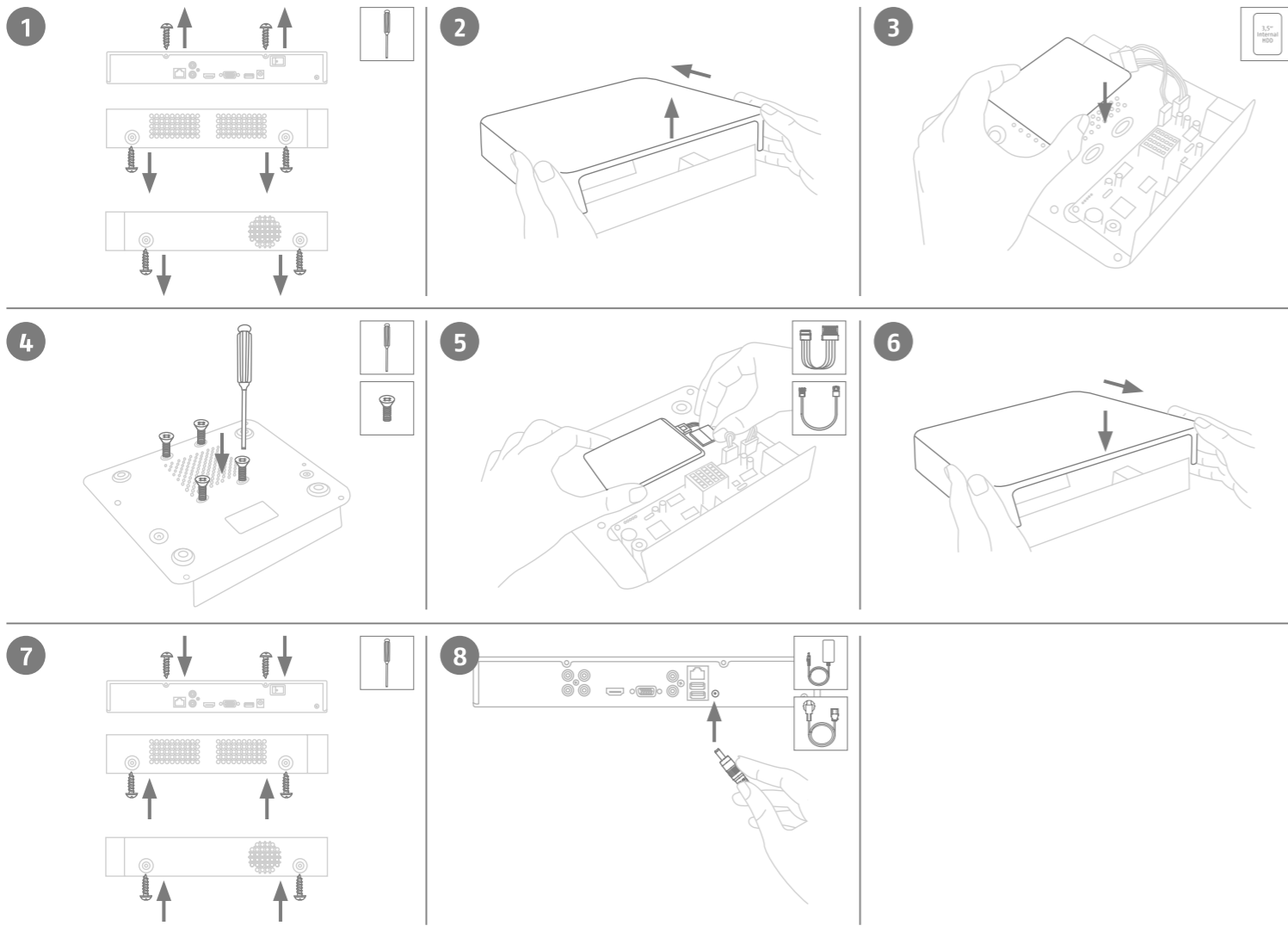
ABUS | Security Center GmbH & Co. KG
abus.com

Linker Kreuthweg 5
86444 Affing
Germany

Tel: +49 8207 959 90-0
sales@abus-sc.com

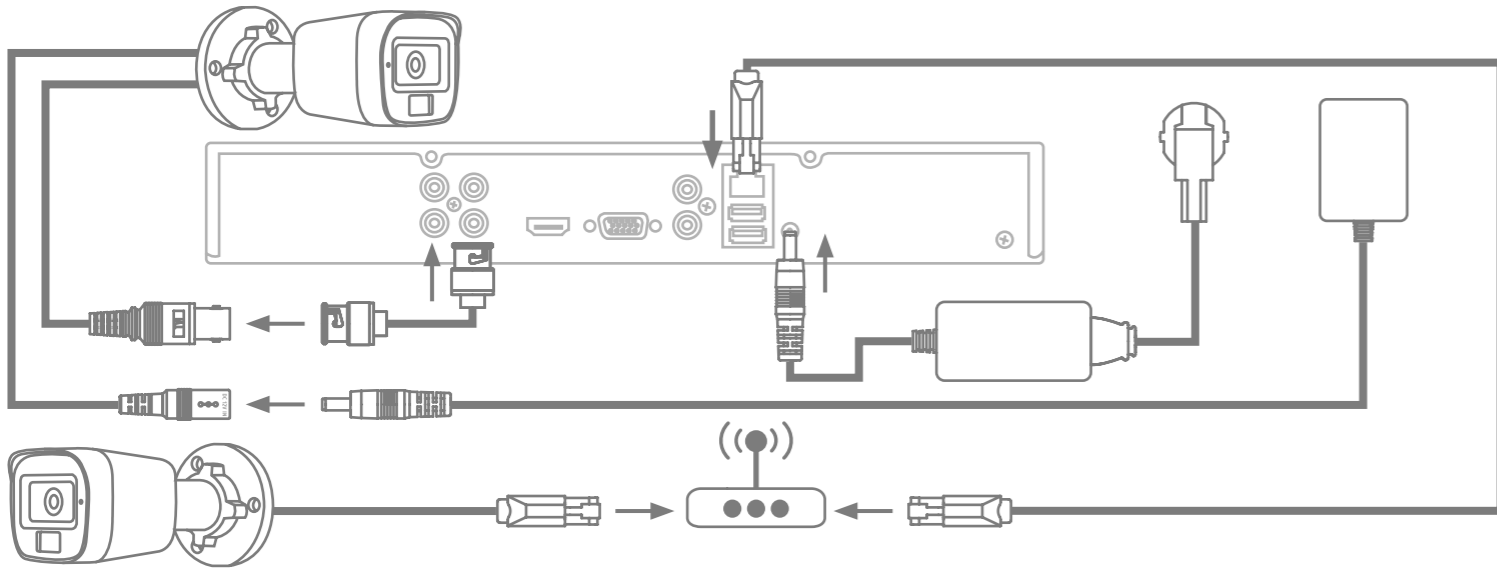
1 HARDWAREINSTALLATION

HARDWARE INSTALLATION • INSTALLATION MATÉRIELLE • HARDWARE-INSTALLATIE • HARDWAREINSTALLATION • HARDWAREINSTALLATION • HÄRDVARUINSTALLATION • INSTALACIÓN DEL HARDWARE • INSTALACJA SPRZĘTU



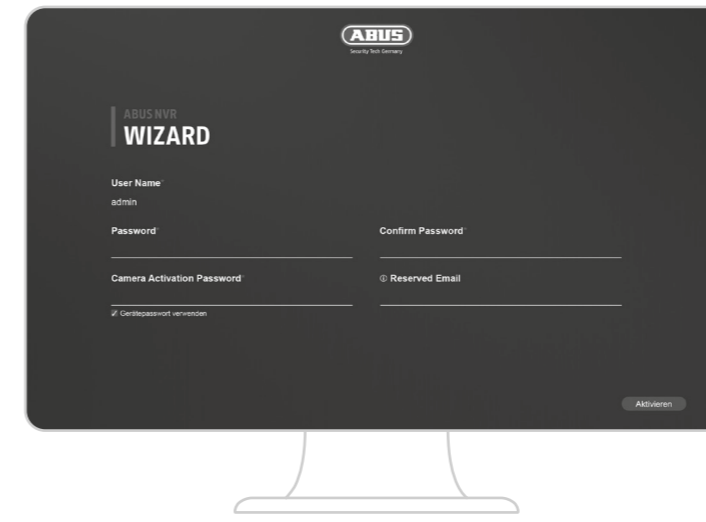
2 INBERIEBNAHME

INITIAL START-UP • IMISE EN SERVICE • INBEDRIJFSTELLING • INSTALLATION • MESSA IN FUNZIONE • IDRIFTTAGNING • PUESTA EN MARCHA • INTEGRACJA



3 SOFTWAREEINRICHTUNG

SOFTWARE SET-UP • CONFIGURATION DU LOGICIEL • SOFTWARE-INSTALLATIE • SOFTWAREOPSÆTNING • CONFIGURAZIONE DEL SOFTWARE • MJUKVARUINSTÄLLNING • INSTALACIÓN DEL SOFTWARE • KONFIGURACJA OPROGRAMOWANIA



Admin Passwort • Admin password • Mot de passe administrateur • Administratorwachtwoord • Administrator-kodeord • Password amministratore • Admin-lösenord • Contraseña del administrador • Hasło administratora:

i APP & SOFTWARE

APP & SOFTWARE • APPLICATION ET LOGICIEL • APP EN SOFTWARE • APP OG SOFTWARE • APP E SOFTWARE • APP OCH PROGRAMVARA • APLICACIONES Y SOFTWARE • APLIKACJA I OPROGRAMOWANIE



Link Station Pro



<https://l.ead.me/bbGUF1>



Link Station Lite



<https://l.ead.me/bbEgDF>



CMS



<https://l.ead.me/beyL2D>



IP-Installer



<https://l.ead.me/beqAL4>