



Security Tech Germany

TECTIQ | WLX PRO

ACCESS COMPONENT

UPDATER

Quick Guide



abus.com

1. Introduction

1.1. Functions

The ABUS "Access Component Updater" is used to update the firmware of TECTIQ fittings, TECTIQ wall readers, the WLX Pro repeater and the cylinders of the TECTIQ and WLX Pro family. With TECTIQ, the firmware update can also be transferred wirelessly with the Admin App via Bluetooth. The IP address of the update terminal can also be set using the "Access Component Updater".

1.2. Prerequisites

To use the ABUS Access Component Updater, you need the following:

- ABUS Micro-USB Updater cable (article number: ACAC00043)
- Access Component Updater Software, available at: www.abus.com/product/tsg10000
- Windows computer, requirement: 1x USB-A connection, Windows 10/11


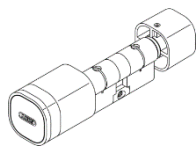
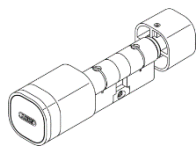
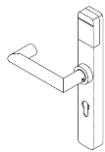
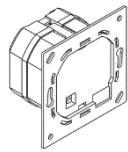
1.3. Download and installation

- Download the latest version of the software: www.abus.com/product/tsg10000
- Unzip the .zip file and carry out the installation
- If required, also install the driver in the software download file

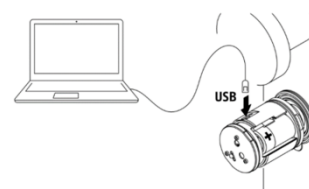
2. Utilisation

2.1. Firmware update

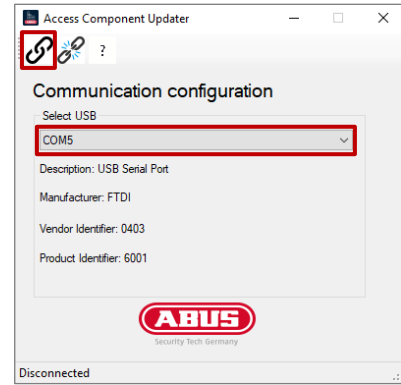
Download the latest firmware data. You can find this on abus.com in the downloads for the respective door product. All links are listed in the table below:

WLX Pro Repeater	WLX Pro cylinder	TECTIQ cylinder	TECTIQ fitting	TECTIQ wall reader
 Link	 Link	 Link	 Link	 Link

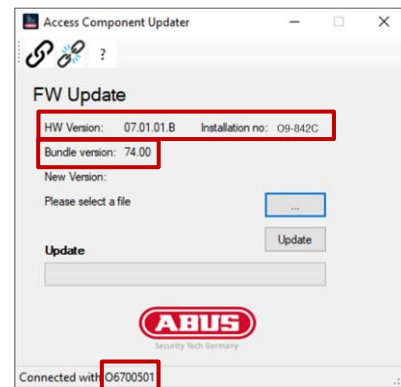
- 1) Connect the updater cable to the micro-USB socket of the door component. The power supply must also be connected to the wall reader control unit and the WLX Pro repeater



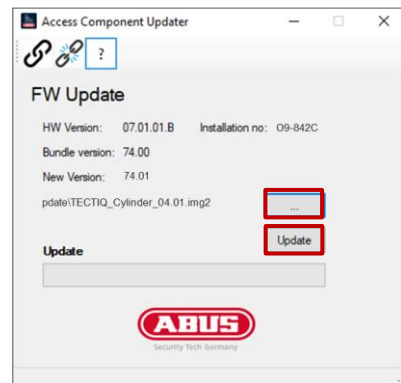
- 2) Connect the updater cable to your PC, start the programme and select the USB port used
- 3) Then click on "Connect"
- 4) If an error message appears: Check in the Device Manager whether the required driver is installed. You will find it in the download file of the Access Component Updater



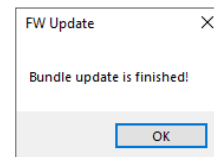
- 5) Once the door component is connected, the HW version, installation number, FW version and serial number are displayed



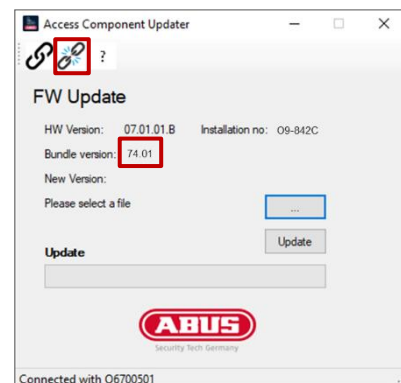
- 6) Select the FW file previously downloaded from abus.com and then click on "Update"



- 7) The firmware update is executed and the component restarts after the transfer. After completion, a message about the successful update appears



- 8) After successful completion, the new firmware version is displayed. You can disconnect the connection using the "Disconnect" button and then unplug the USB cable

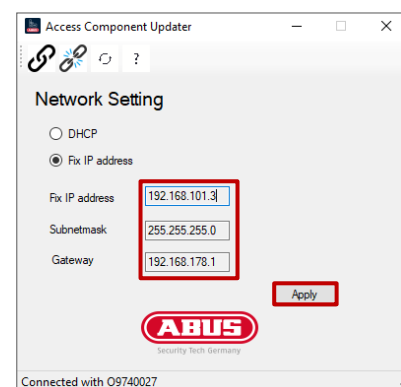
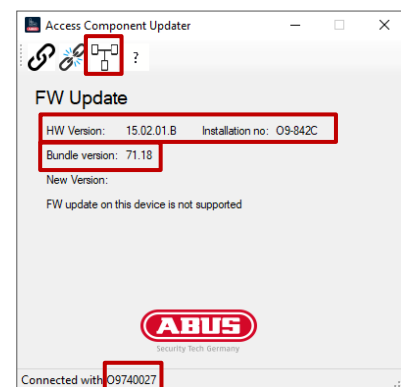
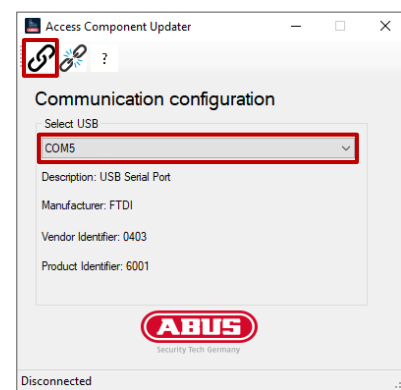
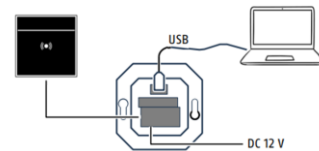


2.2. Set update terminal IP address

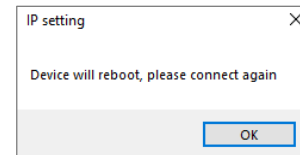
You can find and add update terminals in the Access Manager via mDNS. Alternatively, you can add them via the IP address. On delivery, the update terminal receives its IP address via the DHCP server. After adding via the IP address or via mDNS, you can define a fixed IP address for the update terminal in the Access Manager.

If you want to define a fixed IP address before network integration, you can do this using the Access Component Updater. Proceed as follows:

- 1) Connect the updater cable to the micro-USB socket of the Update Terminal control unit. The power supply (12 V DC power supply unit or PoE) must also be connected. The reader unit does not need to be connected
- 2) Connect the updater cable to your PC, start the programme and select the USB port used
- 3) Then click on "Connect"
- 4) If an error message appears: Check in the Device Manager whether the required driver is installed. You will find this in the download file of the Access Component Updater.
- 5) Once the door component is connected, the HW version, installation number, FW version and serial number are displayed
- 6) Select the network icon in the top menu bar
- 7) Enter the desired IP address, subnet mask and gateway. Then click on "Apply"



- 8) A message about the restart appears. You can then click on "Connect" again and check whether the IP address has been accepted
- 9) Disconnect the connection by clicking on "Disconnect" and unplug the micro USB cable again



ABUS I Security Centre GmbH & Co. KG
abus.com

Linker Kreuthweg 5
86444 Affing
Germany

Phone: +49 82 07 959 90-0
Fax: +49 82 07 959 90-100

sales@abus-sc.com

©
All rights reserved.

10 / 2024